

## Esempi Applicativi

Application Examples

Anwendungsbeispiele

Ejemplos de Aplicaciones



Rotoflux a un passaggio



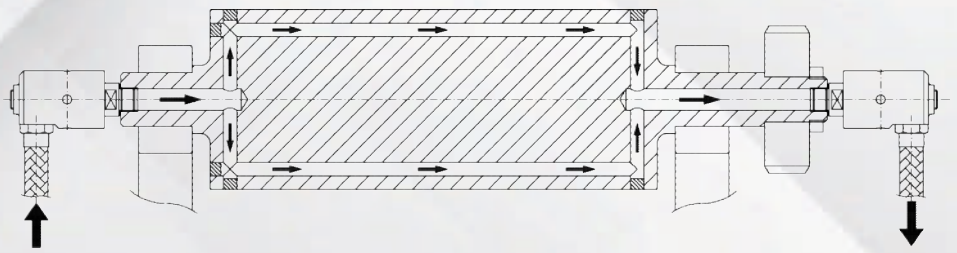
Rotoflux single passage



Rotoflux Einweg-Ausführung



Rotoflux a via simple



Rotoflux a doppio passaggio  
con sifone fisso



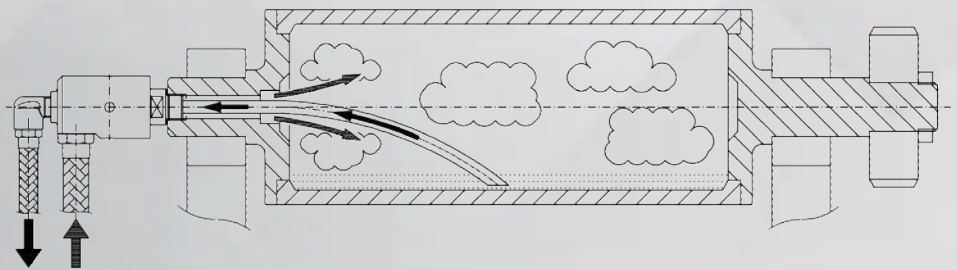
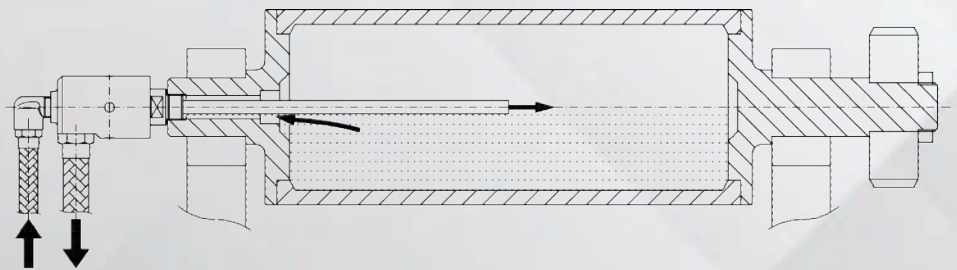
Rotoflux double passage  
stationary siphon



Rotoflux Zweiwege-Ausführung  
für stehendes Innenrohr



Rotoflux de doble vía con sifón fijo



Rotoflux a doppio passaggio  
con sifone rotante



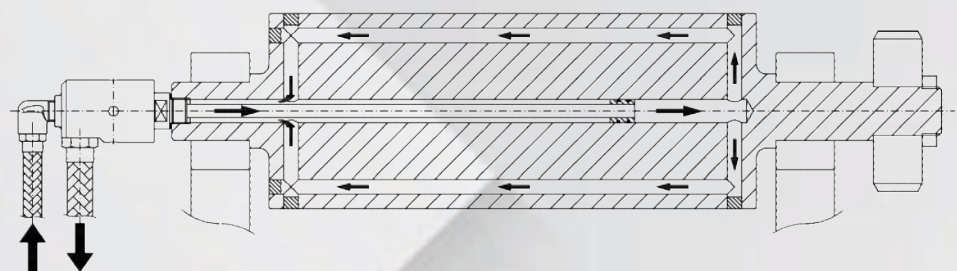
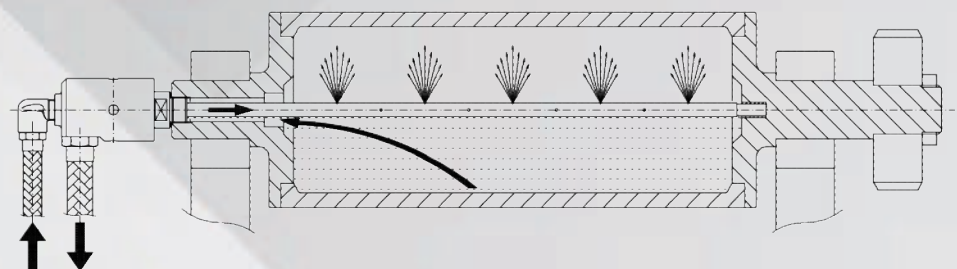
Rotoflux double passage  
rotating siphon



Rotoflux Zweiwege-Ausführung  
für rotierendes Innenrohr



Rotoflux de doble vía con sifón rotativo

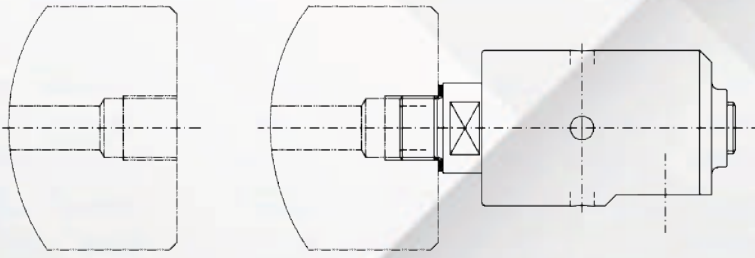



## Esempi Applicativi


### Application Examples


### Anwendungsbeispiele


### Ejemplos de Aplicaciones

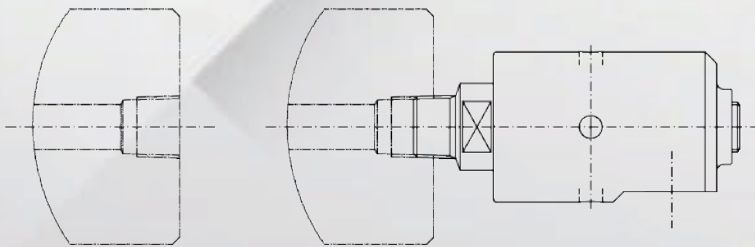



 Montaggio con filettature G , UNF


 Mounting with G , UNF threads


 Montieren von G, UNF Gewinde


 Montaje con rosca G, UNF

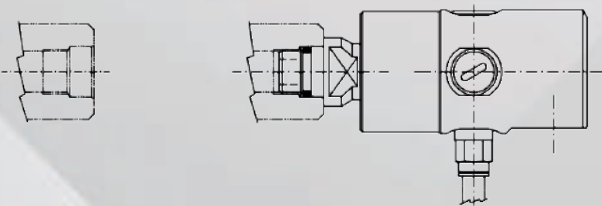



 Montaggio con filettature NPT , PT


 Mounting with NPT , PT thread


 Montieren von NPT, PT Gewinde


 Montaje con rosca NPT, PT

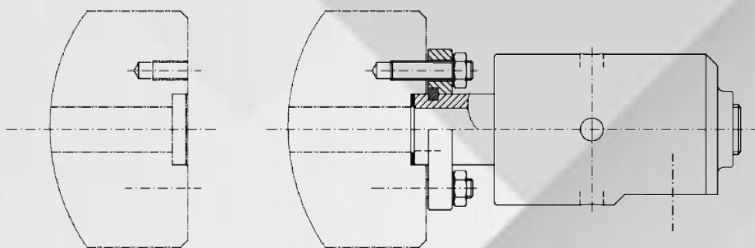



 Montaggio con filettature e centraggio per alte velocità


 Mounting with thread and pilot for high speed application


 Montieren von Gewinde Führungszapfen für hohe Archzahlen


 Montaje con rosca y centrado para velocidad

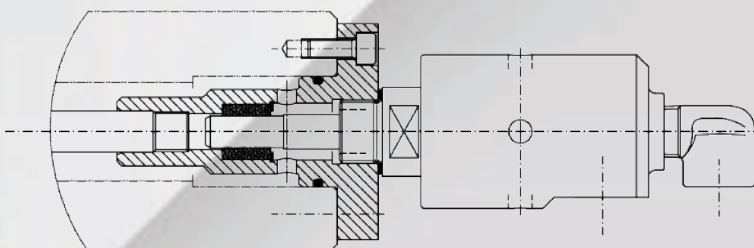



 Montaggio con rotore flangiato per rotazioni sia destrorse che sinistrorse


 Mounting with rotor flange for both clockwise and counterclockwise rotation


 Montieren mit Rotorflansch, für links-und rechtsdrehende Drehungen


 Montaje con rotor embridado para rotaciones horarias y anti-horarias.



 Montaggio con tubo sifone in due parti, per applicazioni con tubi sifoni molto lunghi o alte velocità

 Mounting with siphon splitted in two parts for application with long siphon or high speed rotation

 Mounyieren mit zweiteiligem Innenrohr, für Anwenfungen mit sehr langen innenrohren ofer hohen Drehzahlen

 Montaje con sifón dividido en dos partes para aplicaciones de ala velocidad o con sifones muy largos